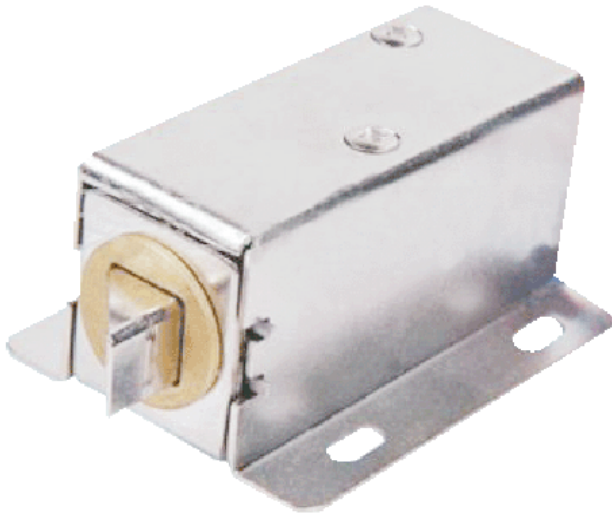




*Ultralow Temperature and Low Power Consumption  
Beautiful Appearance and Good Safety*

## MEC-CL100

### Electric Cabinet Lock



#### ADVANTAGE OF THE PRODUCTS

- Photoelectric control technology, prevent mechanical failure.
- Ultra-low temperature design, Safer and more durable.
- More than 500000 working times.
- Ultra-low-power design, More durable and more environmentally friendly.
- Built-in reverse current and prevention device (MOV).
- High strength aluminum alloy lock body, stainless steel lock bolt.
- Products pass the EU CE and china MA qualified certification.
- Intelligent single chip configuration, three types current application.

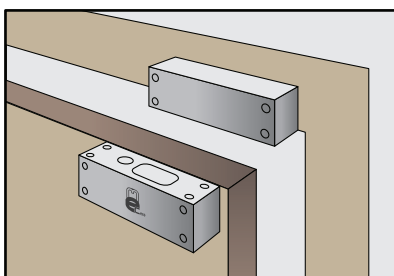
#### PRODUCT OVERVIEW

Electric Bolt lock is kind of electric control locks, it works by means of extending or retracting the lock bolt with electric current. The VIANS Electric Bolt lock use the microprocessor chip to control electric circuit, so it decreases the power consumption and really has the ultralow temperature function. After 500000 times of test, we can assure our locks are more stable, more environmentally friendly and durable. Electric Bolt lock is designed mainly for glass door, wooden door and metal door, it is suitable for bidirectional door and sliding door, becomes the best choice of access control automation management.

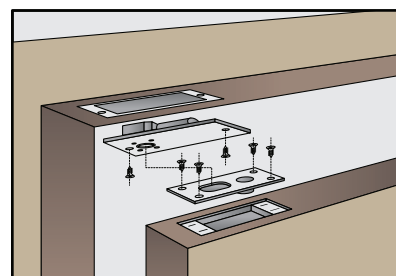
#### SPECIFICATION

Model	:	MEC-CL100
Lock Size	:	55Lx40Wx30H(mm)
Pin length	:	10Lx10Wx10H(mm)
Input Voltage	:	DC12V±10%
Working Current	:	60mA
Temperature	:	-40°C~+50°C
Door Type Applicable	:	File Cabinet
Signal output	:	No
Security Type	:	Locked when energized
Weight	:	0.18KG

#### INSTALLATION DRAWING



Exposed Installation



Embedded Installation